

Client

Nature's FUSIONS
 ESSENTIAL OILS

Source

Fir Balsam (Abies balsamea)
NF-BALF-19-A

Sample

Fir Balsam (Abies balsamea)

Batch #:..... | **NF-BALF-19-A**

Type:..... | **Essential Oil**

CAS Number:... | **8021-28-1**

Nature's Fusions

Client

Nature's FUSIONS
 ESSENTIAL OILS

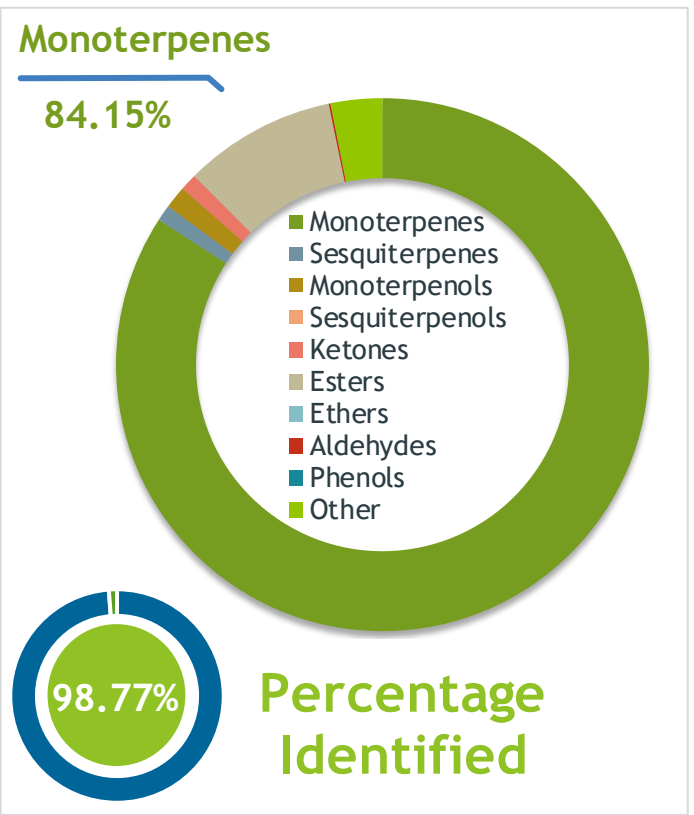
Website

Primary

29.16% | **beta-Pinene**

16.20% | **Limonene (Co-Eluting)**

16.00% | **delta-3-Carene**



Result

Conclusion

No adulterants, diluents, or contaminants were detected via this method. This oil meets the expected profile for genuine essential oil of Fir Balsam (Abies balsamea)

Internal Number: | **EVS-2897**

Essential Validation Services

747 SW 2nd Ave IMB 12 Suite 306
Gainesville, FL 32601

317.361.5044 | <https://essentialvalidationservices.com/>

adam@essentialvalidationservices.com

Monoterpenes	84.15%	84.15%
Sesquiterpenes	0.98%	0.98%
Monoterpenols	1.37%	1.37%
Sesquiterpenols	0.00%	0.00%
Ketones	1.02%	1.02%
Esters	9.24%	9.24%
Ethers	0.00%	0.00%
Aldehydes	0.11%	0.11%
Phenols	0.00%	0.00%
Other	3.13%	3.13%

ESSENTIAL VALIDATION SERVICES | 747 SW 2ND AVE GAINESVILLE, FLORIDA 32601 | 317-361-5044

Client


Nature's FUSIONS
 ESSENTIAL OILS

Source



Fir Balsam (Abies balsamea)
 NF-BALF-19-A

Total Percentage		98.77%			
Number	RT	Area %	Compound Name	RI	Chemical Family
1	10.84	1.90%	Santene	884.00	Normonoterpene
2	12.35	0.95%	Tricyclene	923.00	Monoterpene
3	12.58	0.17%	alpha-Thujene	927.80	Monoterpene
4	12.87	11.19%	alpha-Pinene	936.10	Monoterpene
5	13.47	6.44%	Camphene	950.30	Monoterpene
6	14.41	0.03%	Sabinene	973.00	Monoterpene
7	14.71	29.16%	beta-Pinene	974.00	Monoterpene
8	15.25	1.70%	Myrcene	989.20	Monoterpene
9	15.83	0.18%	alpha-Phellandrene	1002.00	Monoterpene
10	16.10	16.00%	delta-3-Carene	1008.00	Monoterpene
11	16.33	0.12%	alpha-Terpinene	1014.00	Monoterpene
12	16.66	0.31%	para-Cymene	1024.30	Monoterpene
13	16.88	16.20%	Limonene	1029.50	Monoterpene
14	16.89	Co-Eluting	beta-Phellandrene	1030.00	Monoterpene
15	18.09	0.25%	gamma-Terpinene	1054.00	Monoterpene
16	18.66	0.01%	cis-Linalool oxide (5) (furanoid)	1075.10	Monoterpenol
17	19.31	1.45%	Terpinolene	1092.10	Monoterpene
18	19.71	0.15%	Linalool	1099.00	Monoterpenol
19	21.34	0.08%	alpha-Pinocarveol	1143.75	Monoterpenol
20	21.55	0.71%	Camphor	1147.55	Monoterpene Ketone
21	21.72	0.13%	Camphene hydrate	1151.00	Monoterpenol
22	22.37	0.36%	Borneol	1168.71	Monoterpenol
23	22.79	0.30%	Terpinen-4-ol	1180.57	Monoterpenol
24	23.13	0.08%	Cryptone	1187.33	Monoterpene Ketone
25	23.28	0.34%	alpha-Terpineol	1191.71	Monoterpenol
26	23.54	0.11%	Myrtenal	1200.43	Monoterpene Aldehyde
27	25.61	0.23%	Piperitone	1258.50	Monoterpene Ketone
28	26.75	9.24%	Bornyl acetate	1288.29	Monoterpene Ester
29	29.06	0.06%	alpha-Longipinene	1357.90	Sesquiterpene
30	31.34	0.25%	beta-Caryophyllene	1427.14	Sesquiterpene
31	32.26	0.04%	(E)-beta-Farnesene	1456.29	Sesquiterpene
32	32.42	0.11%	alpha-Humulene	1461.43	Sesquiterpene
33	33.96	0.52%	beta-Bisabolene	1509.86	Sesquiterpene

 ESSENTIAL VALIDATION SERVICES | 747 SW 2ND AVE GAINESVILLE, FLORIDA 32601 | 317-361-5044

